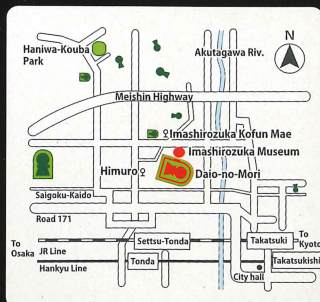
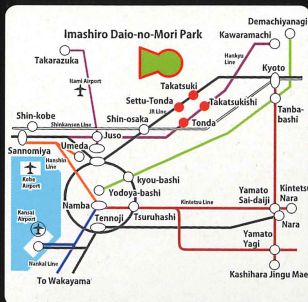


## Imashirozuka Burial Mound

Imashirozuka Burial Mound is one of the greatest keyhole-shaped mound in the Yodogawa valley that was built in the first half of the 6th century and that offers the canal of double. Scientifically, it is called the true Imperial mausoleum of Keitai the Great King. In the excavation investigation over ten years, precious discovery of the greatest Haniwa altar in Japan, the building blocks in a tumulus and the foundation stones laid to support the barial chamber which were the most advanced engineering-works technology of that time succeeded one another. It is an irreplaceable history inheritance as an only Great king Burial Mound which can consider concretely whether it was built, what kind of festival was performed how, was moreover buried.



Get off at JR Settsu-Tonda or Hankyu Tonda Station  
Daio-no-Mori Park is 25 minutes away on foot

### By Public Bus

To Nasahara Nanpei-dai course immediately from Imashirozuka Kofun Mae  
To Kansai University, To Hagitani, To Hagitani Sogo Koen 3 minutes from Himuro

### Imashirozuka Museum

Open ● 10:00~17:00 (last admission at 16:30)  
Closed ● Mondays and the next days of National Holidays / year-end holidays (12/28~1/3)  
Admissions ● Free (Special exhibitions require a separate admission fee)  
48-8 Gunge-shinmachi, Takatsuki, Osaka, 569-1136  
TEL 072-682-0820 / FAX 072-682-0930  
URL ● [http://www.city.takatsuki.osaka.jp/rekishi\\_kanko/rekishi/rekishikan/daio/](http://www.city.takatsuki.osaka.jp/rekishi_kanko/rekishi/rekishikan/daio/)  
E-mail ● [bunkazai@city.takatsuki.osaka.jp](mailto:bunkazai@city.takatsuki.osaka.jp)



## Imashiro Daio-no-Mori Park

いまいろ 大庭の杜



## The Historic Site Imashirozuka Burial Mound

史跡 今城塚古墳

## Imashirozuka museum

今城塚  
古代歴史館

## Imashiro Daio-no-Mori Park

いまいろ 大庭の杜

# いましろ 大王の杜

## Imashiro Daio-no-Mori Park The Historic Site Imashirozuka Burial Mound

### Haniwa Festival of great king

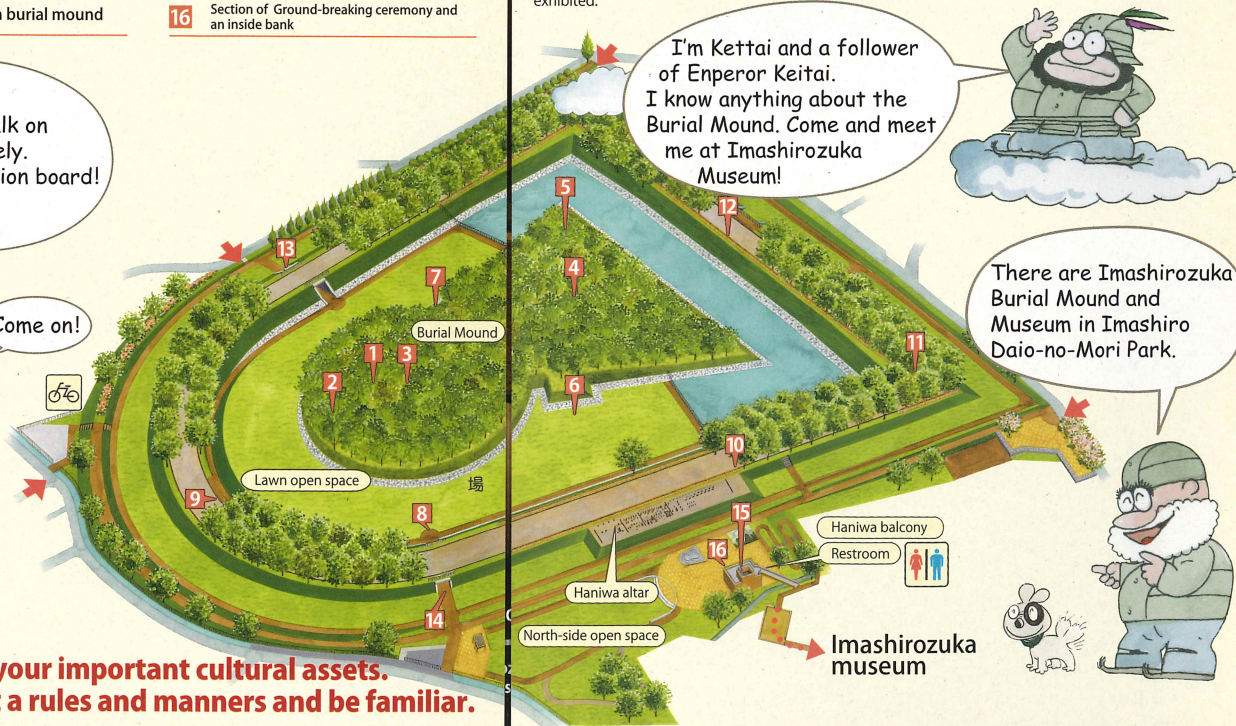
In the Haniwa altar which is the greatest feature, more than 200 Representational Haniwa such as houses, persons, animals and so on. Here is the only place where you can see the reproduction of the Emperor's tomb.



- |  |   |
|--|---|
| <ul style="list-style-type: none"> <li>1 Designed to protect Piled-up Earth of tumulus from rainwater</li> <li>2 Institution of a back circle part terrace</li> <li>3 Foundation stones supporting a heavy burial chamber</li> <li>4 Burial mound collapsed from an earthquake</li> <li>5 The corner in the Southwest remaining the shape of the time of construction</li> <li>6 Place for a ceremony (north)</li> <li>7 Place for a ceremony (south)</li> <li>8 Canal surrounding a burial mound</li> </ul> | <ul style="list-style-type: none"> <li>9 Bank surrounding an inner canal</li> <li>10 Stage for Haniwa Festival</li> <li>11 Fence showing a sanctuary</li> <li>12 Banl surrounding an inner canal</li> <li>13 Canal which does not collect water</li> <li>14 Section of Ground-breaking ceremony and an inside bank</li> <li>15 View Spot of Haniwa Festival</li> <li>16 Section of Ground-breaking ceremony and an inside bank</li> </ul> |
|--|---|

You can take a walk on Burial Mound freely. Find the explanation board!

Come on!



● Kofun park is your important cultural assets. Please protect a rules and manners and be familiar.

Imashirozuka Burial Mound, the history inheritancere presenting Japan finished the excavation investigation over ten years, and the maintenance construction which reaches in seven years, and was reborn in the rich green Kofun Park of 9 ha of width. Feel grand history space.



**Burial Mound**

The form of the keyhole-shaped mound was recreated. Moreover, the form of the burial mound which collapsed in the Fushimi earthquake of the Age of Civil Wars and timber are utilized.



**Inner canal**

Water was filled in the inner which surround the burial mound. The part is restored



**Cross-sectional exhibition of inner canal**

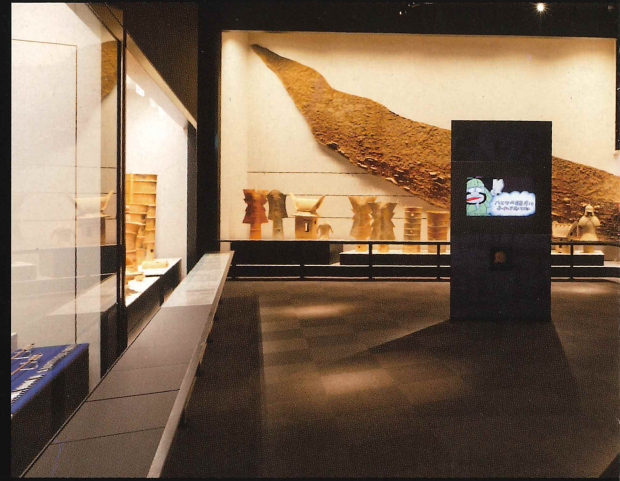
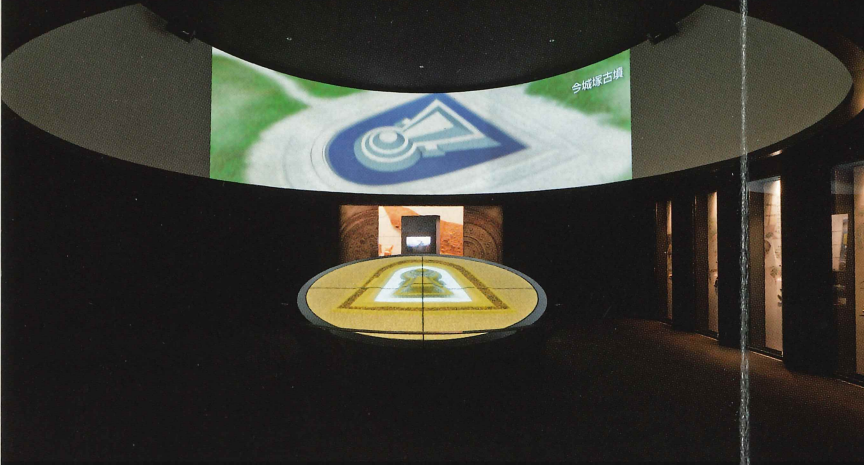
In the north-side underground passage which connects an outside canal and an inner canal, Cross-sectional layer of Piledup Earth checked by investigation of inside bank is stripped, and is exhibited.



**Haniwa altar**

About 190 Representational Haniwa-houses, swords, persons, animals etc.-are restored to the position confirmed by exabation investigation.



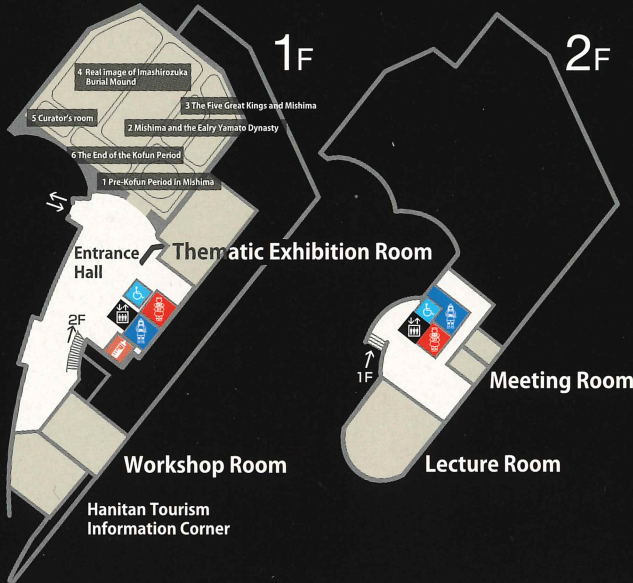


**1 Pre-Kofun Period in Mishima** It explains even a king's appearance through Jomon period and Yayoi period from the Old stone Age with the pleasant video.

**2 Mishima and the Early Yamato Dynasty**

**Floor Map**

Permanent Exhibition Room



- Restroom (Ladies)
- Restroom (Gentlemen)
- Restroom (Accessible)
- Nursery Room
- EV



**4 Real image of Imashirozuka Burial Mound II** (Funeral rite of G

Approach to the funeral rite of Great King Burial Mound by genuine Haniwa group found in Imashirozuka houses, gates, fences, swords, shields, warriors, priestess, wrestlers, and animals, three restoration st

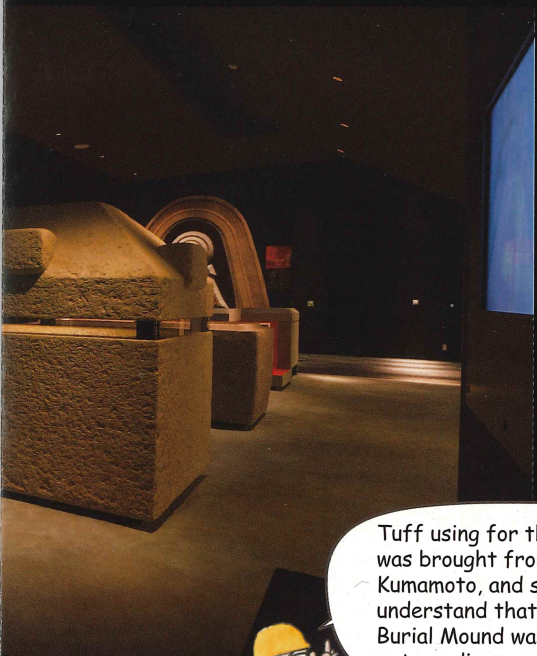
The museum explains, starting with the outline of the Mishima Kofun group, various creative devices of making the burial mound which became clear by exsavation investigation of Imashirozuka Burial Mound, also using the real size's diorama models and some videos. It is a place of a history experience and the learning, in which send various information through real Haniwa and abundant unearthed articles as a base of the history inheritance network.



3 The Five Great Kings and Mishima



4 Real image of Imashirozuka Burial Mound I <Construction of Gigantic Burial Mound>



Great King Burial Mound)

Imashirozuka Burial Mound -such as  
one coffins and some burial items.



5 Curator's room

It introduces curator's works through the science search for Burial Mound, analytical skills, etc.

6 The End of Kofun Period

From the appearance of Clusters of Small Kofun to the construction of the temple, it explores the formation process of Ritsuryo Kokka -the Japanese nation under the ritsuryo codes



Tuff using for the stone coffin was brought from Nara, Hyogo ~ Kumamoto, and so on. You will understand that Imashirozuka Burial Mound was built under the extraordinary power.



There is a kiln in a workshop room so you can experience creating Haniwa. Come on and challenge!